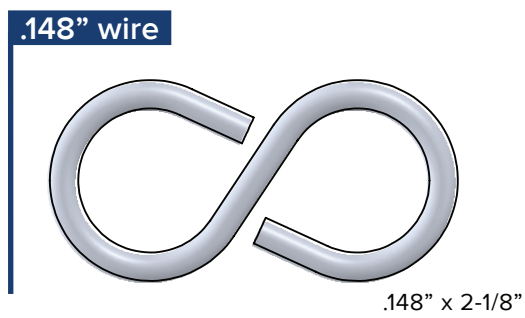
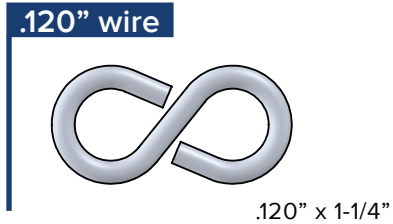
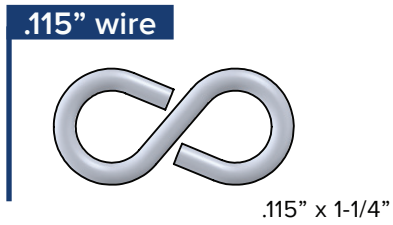
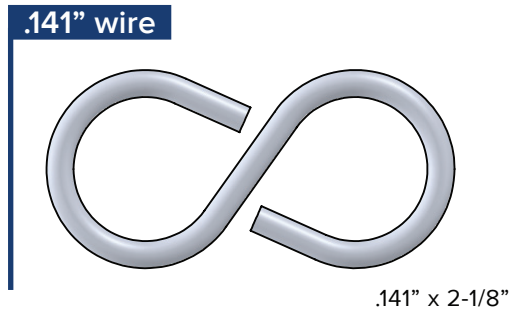
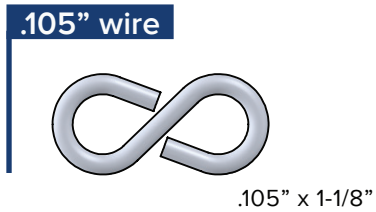
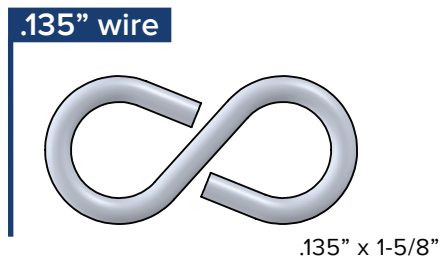
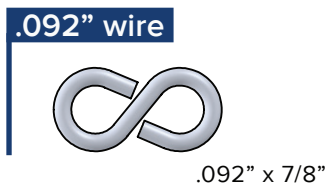


S-Hooks are defined by style, wire diameter and overall length. All image shapes are approximate.

## Light Closed Style



**IMPORTANT:** Make sure to print this chart to Actual Size (no scaling).  
After printing, measure the ruler in the margin to ensure correct scale. See [boltdepot.com/tools](http://boltdepot.com/tools) for more details.



# Light Open Style

## .080" wire

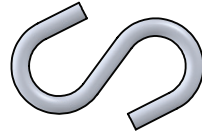


.080" x 3/4"

## .092" wire

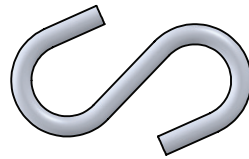


.092" x 7/8"

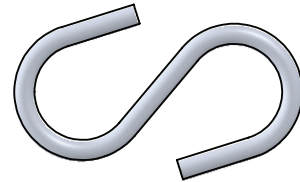


.092" x 1"

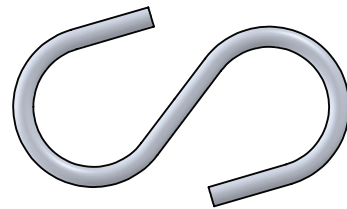
## .105" wire



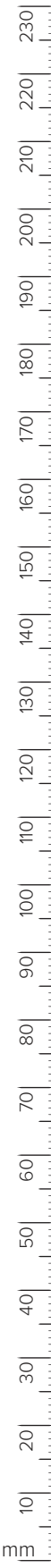
.105" x 1-1/4"



.105" x 1-1/2"



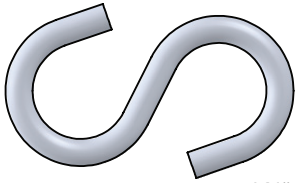
.105" x 1-3/4"



**IMPORTANT:** Make sure to print this chart to Actual Size (no scaling).  
After printing, measure the ruler in the margin to ensure correct scale. See [boltdepot.com/tools](http://boltdepot.com/tools) for more details.

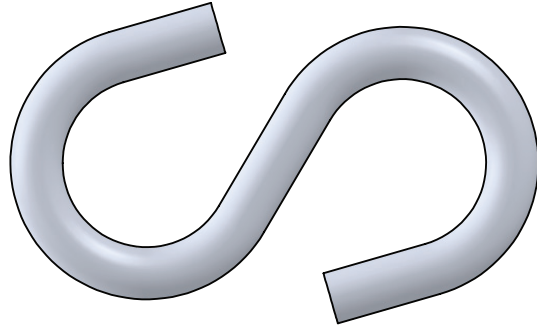
# Medium Open Style

**.141" wire**



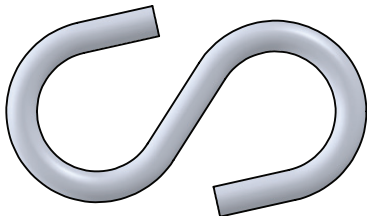
.141" x 1-1/2"

**.272" wire**



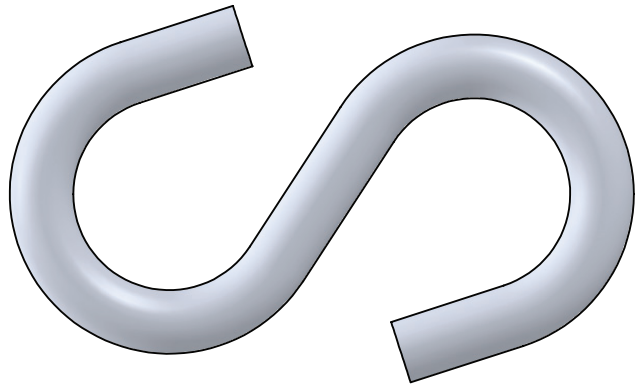
.272" x 2-3/4"

**.160" wire**



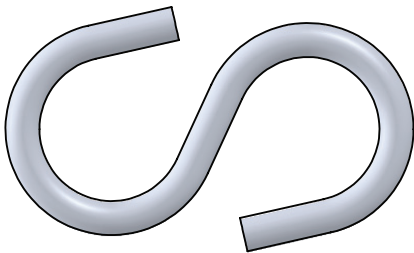
.160" x 1-7/8"

**.331" wire**



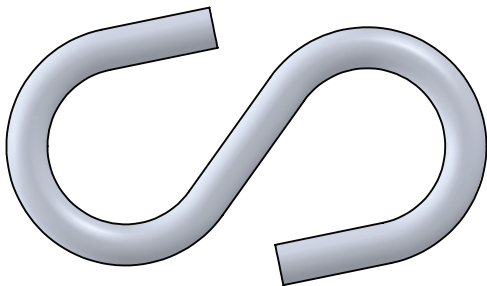
.331" x 3-1/4"

**.177" wire**



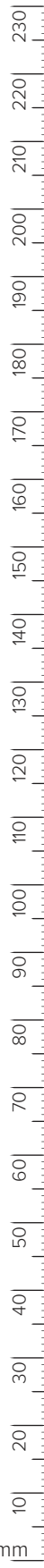
.177" x 2-1/8"

**.214" wire**



.214" x 2-1/2"

**IMPORTANT:** Make sure to print this chart to Actual Size (no scaling).  
After printing, measure the ruler in the margin to ensure correct scale. See [boltdepot.com/tools](http://boltdepot.com/tools) for more details.

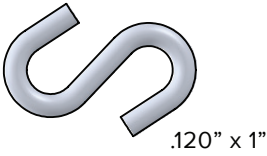


# Heavy Open Style

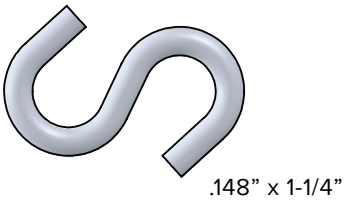
**.092" wire**



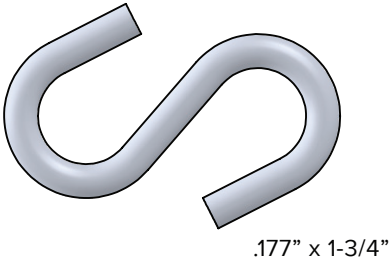
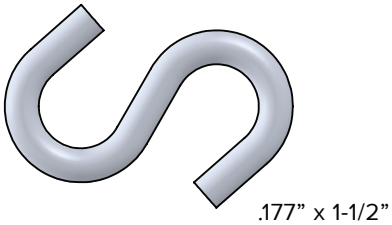
**.120" wire**



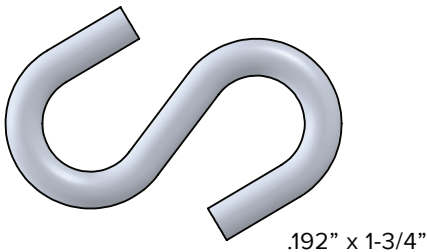
**.148" wire**



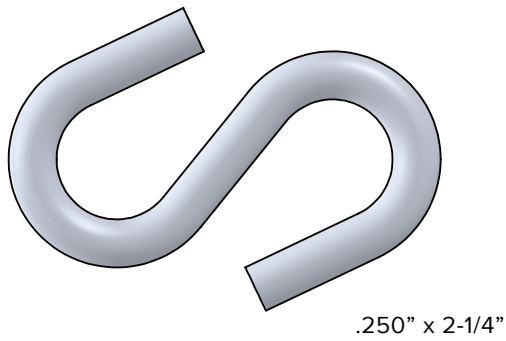
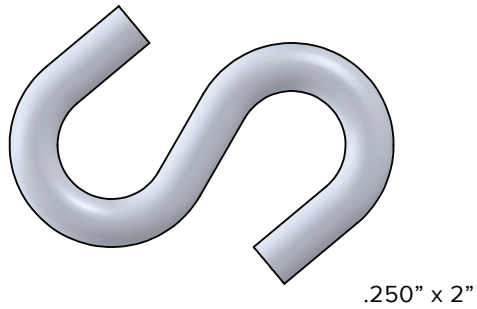
**.177" wire**



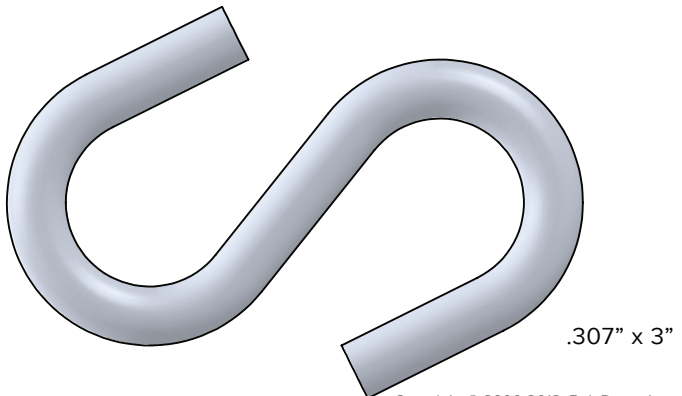
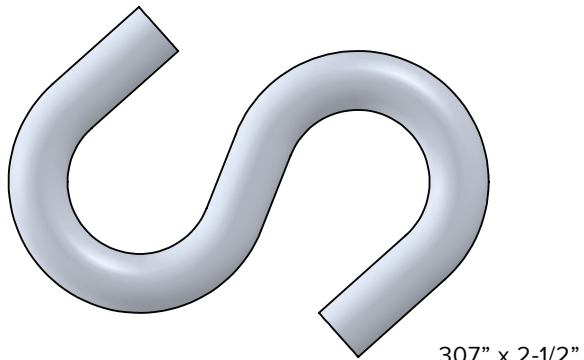
**.192" wire**



**.250" wire**



**.307" wire**



Copyright © 2000-2018 Bolt Depot Inc.

**IMPORTANT:** Make sure to print this chart to Actual Size (no scaling).

After printing, measure the ruler in the margin to ensure correct scale. See [boltdepot.com/tools](http://boltdepot.com/tools) for more details.

